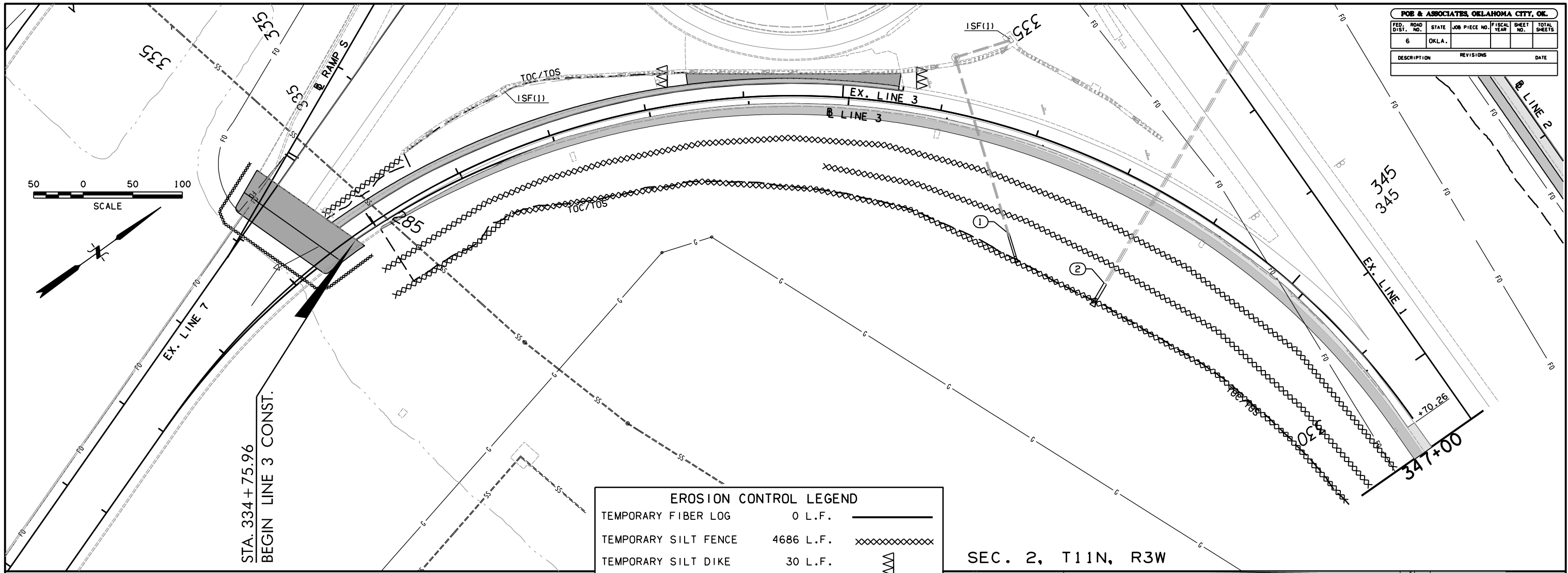
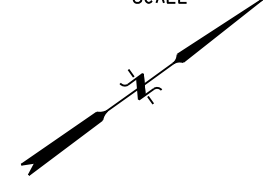


POE & ASSOCIATES, OKLAHOMA CITY, OK.						
FED. ROAD DIST. NO.	STATE	JOB PIECE NO.	FISCAL YEAR	SHEET NO.	TOTAL SHEETS	
6	OKLA.					
DESCRIPTION		REVISIONS	DATE			

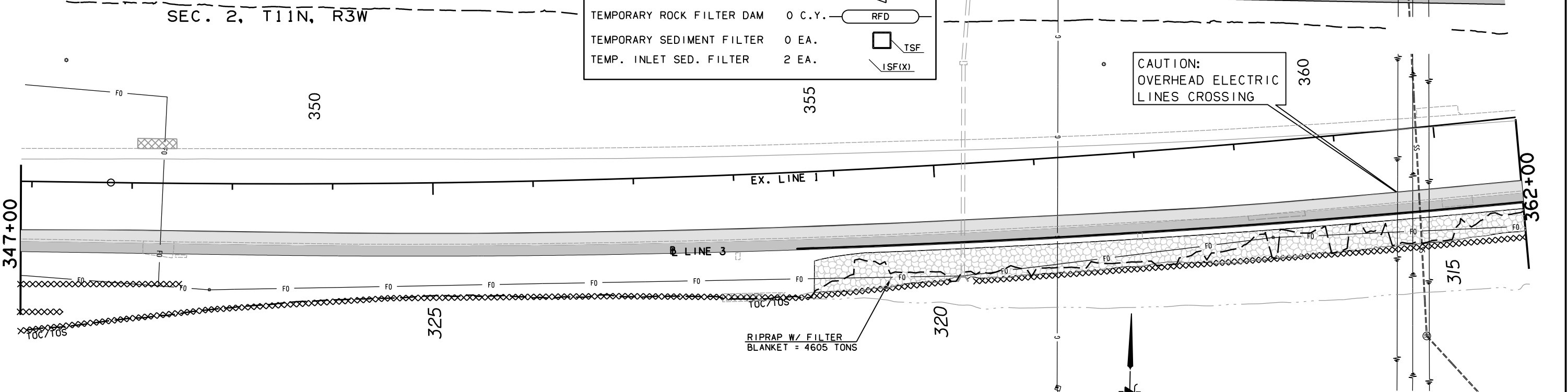


STA. 334 + 75.96
BEGIN LINE 3 CONST.

EROSION CONTROL LEGEND		
TEMPORARY FIBER LOG	0 L.F.	—————
TEMPORARY SILT FENCE	4686 L.F.	XXXXXXXXXX
TEMPORARY SILT DIKE	30 L.F.	▲▲▲▲▲
TEMPORARY ROCK FILTER DAM	0 C.Y.	RFD
TEMPORARY SEDIMENT FILTER	0 EA.	TSF
TEMP. INLET SED. FILTER	2 EA.	ISF(x)

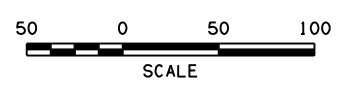
SEC. 2, T11N, R3W

SEC. 2, T11N, R3W



CAUTION:
OVERHEAD ELECTRIC
LINES CROSSING

RIPRAP W/ FILTER
BLANKET = 4605 TONS



DESIGN	-	-
DRAWN	JAG	6/17
CHECKED	-	-
APPROVED	-	-
SQUAD	POE	

LINE 3
EROSION CONTROL SHEET
1 OF 2
STATE JOB NO. 30444(06) SHEET NO. 26
OKLAHOMA COUNTY

8/31/2017 2:32:47 PM H:\PROJECTS\203078_0001_EC-1611\Roadway\Drawings\203078_Line 3_EroCtrlr1.dgn